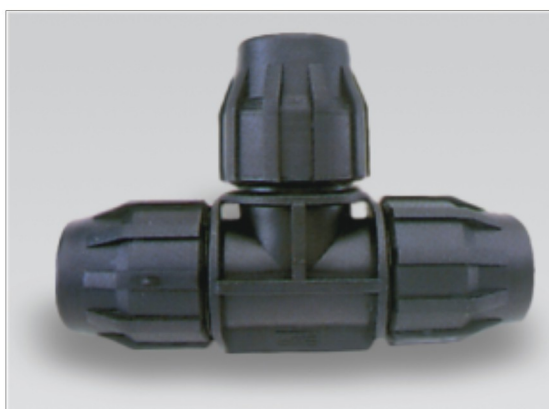




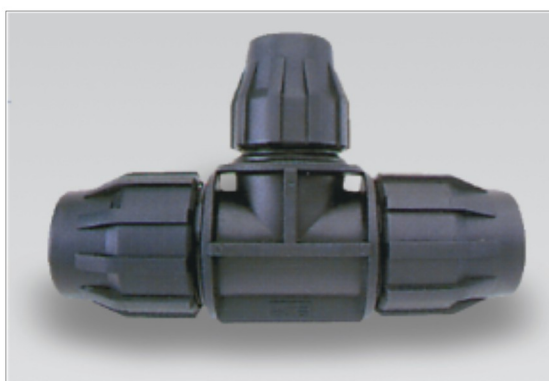
CODO 90° ROSCA HEMBRA

REF.	MEDIDAS mm.	NORMALIZACIÓN	UDS. CAJA
20403501	20 - 1/2"	AENOR	50
20403502	25 - 3/4"	AENOR	50
20403503	32 - 3/4"	AENOR	25
20403504	32 - 1"	AENOR	25
20403505	40 - 1 1/4"	AENOR	25
20403506	50 - 1 1/2"	AENOR	15
20403507	63 - 2"	AENOR	15
20403508	75 - 2 1/2"	-	5
20403509	90 - 3"	-	5



" T " BOCAS IGUALES

REF.	MEDIDAS mm.	NORMALIZACIÓN	UDS. CAJA
20404001	20	AENOR	50
20404002	25	AENOR	50
20404003	32	AENOR	25
20404004	40	AENOR	20
20404005	50	AENOR	10
20404006	63	AENOR	5
20404007	75	-	5
20404008	90	-	5



" T " REDUCIDA AL CENTRO

REF.	MEDIDAS mm.	NORMALIZACIÓN	UDS. CAJA
20404501	25 - 20 - 25	AENOR	50
20404502	32 - 25 - 32	AENOR	25
20404503	40 - 32 - 40	AENOR	25
20404504	50 - 40 - 50	AENOR	10
20404505	63 - 50 - 63	AENOR	5
20404506	75 - 63 - 75	-	5
20404507	90 - 75 - 90	-	5



" T " ROSCA HEMBRA

REF.	MEDIDAS mm.	NORMALIZACIÓN	UDS. CAJA
20405001	20 - 1/2"	AENOR	50
20405002	25 - 3/4"	AENOR	50
20405003	32 - 3/4"	AENOR	25
20405004	32 - 1"	AENOR	25
20405005	40 - 1 1/4"	AENOR	25
20405006	50 - 1 1/2"	AENOR	15
20405007	63 - 2"	AENOR	5
20405008	75 - 2 1/2"	-	5
20405009	90 - 3"	-	5



ENLACE RECTO

REF.	MEDIDAS mm.	NORMALIZACIÓN	UDS. CAJA
20405501	20 - 20	AENOR	50
20405502	25 - 25	AENOR	50
20405503	32 - 32	AENOR	25
20405504	40 - 40	AENOR	25
20405505	50 - 50	AENOR	15
20405506	63 - 63	AENOR	10
20405507	75 - 75	-	5
20405508	90 - 90	-	5
20405509	110 - 110	-	6